

## Slow Scan LCD Monitor

The 19LM151A71UN/1 Series of 15.0" LCD monitors has been designed primarily for Slow Scan Legacy Systems as replacements for CRT monitors. They utilize a modern XGA TFT panel and a KME-designed Analog-Digital interface board.

All elements, including a toughened glass protection screen, have been packaged in a compact metal housing. (Dimensions are compatible with previous 15.1" series) The heavy-duty stand has the AC power supply in its base.

By special development of our Signal Recognition and Scaling software KME has created a Universal flat panel monitor with unique 15kHz to 60kHz display capabilities.

Some common Slow Scan Signal timings are factory pre-set. New ones may be added on request. Other signals, which are close to those listed, will give a display but some adjustment may be necessary for full screen performance. The final settings can be easily stored for future use.

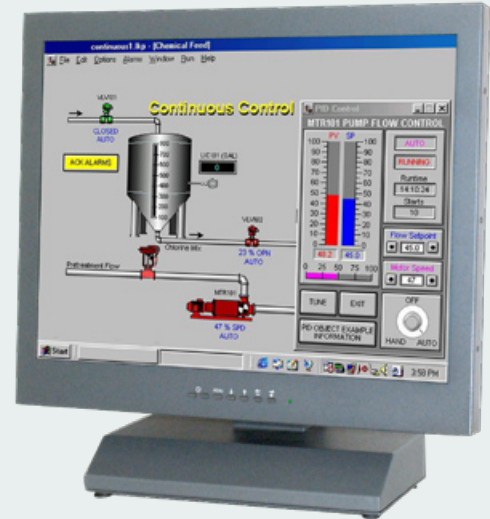
## Features

- Specially Designed for Slow Scan Signals
- CGA, EGA and all VESA standards up to XGA
- Image Size Adjustment & Save
- TTL, Analog & Interlaced Signals Accepted
- Accessory Cables for BNC & 9D Inputs
- Rugged Metal Construction with Good Stability
- Panel, Rack Mount, Head & Chassis Versions

## Slow Scan Support - examples

H. kHz	V. Hz	Pixels	H. kHz	V. Hz	Pixels
15.625	50	714 * 288	15.63	50	560 * 275
15.63	60	808 * 238	15.72	60	564 * 240
15.72	60	508 * 240	15.72	60	604 * 240
15.72	60	640 * 200	16.10	50	564 * 304
16.276	70	640 * 220	16.79	70	577 * 215
17.85	50	508 * 338	21.83	60	640 * 350
20.65	50	640 * 384	24.78	60	640 * 384

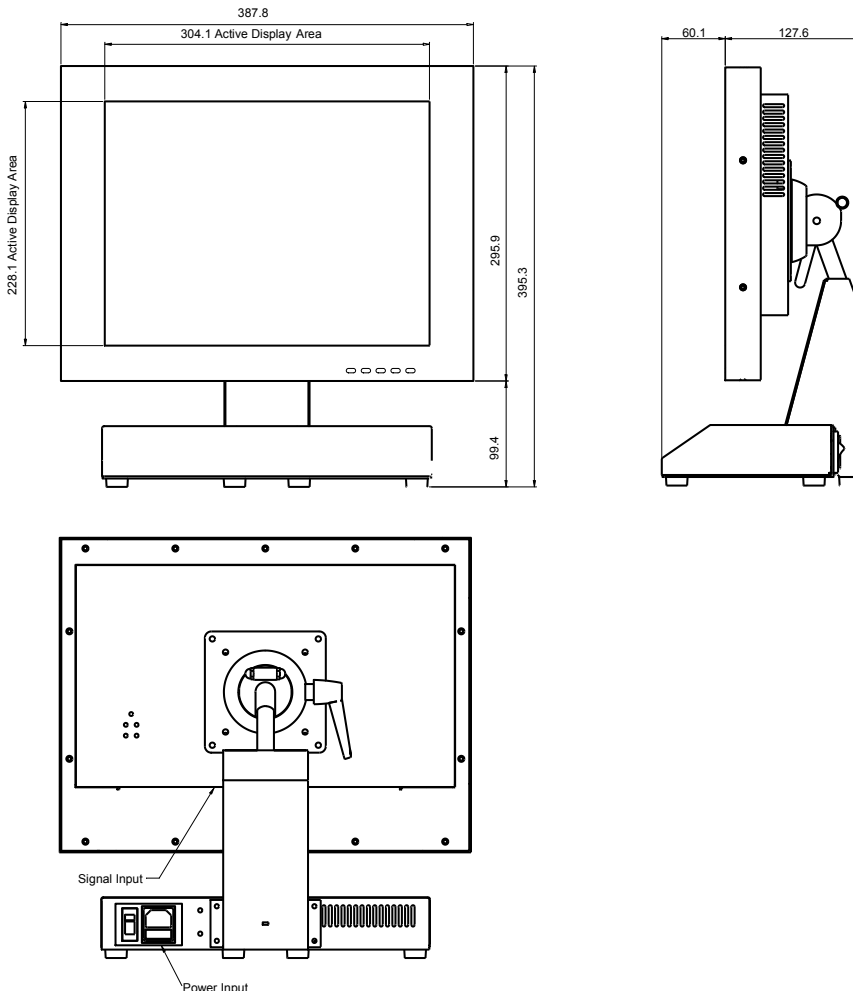
## 15" Desktop LCD Monitor 19LM151A71UN/1



Specifications: see next page

Specifications		
TFT Characteristics	Type Max. Resolution Active Display Area Contrast Ratio Brightness Viewing angles (at CR>10) Backlight life Clock rate Nr. of colours	AM Colour TFT 1024 x 768 pixels 304 x 228 mm 450:1 typical 250 cd/m <sup>2</sup> typical 130°H, 110°V 50,000 hrs typical 112MHz max. 16 million
Sync. Type/Level	Separate H&V (+/-ve) TTL	or Composite (-ve) TTL or Sync-on-Green (-ve) 0.3V
Signal Sync	Analog RGB 0.7-1.0Vp-p or TTL	RGB >2.75Vp-p
Synchronisation Range	Horizontal scan Vertical scan	15-60kHz 40 to 100Hz
Power supply	90/260V 50/60Hz	Power pack inside base
Power consumption	35W (Max)	
Environmental	Storage temp Operating temp	-20 to 60°C 0 to 50°C
Dimensions	Monitor Weight	388 x 399 x 187 mm 6.5 kg approx
Input	15D BNC x 5, 9D	
Housing	Painted aluminium	
User controls	Front mounted	
On screen buttons	Brightness, Contrast, H/V Position & Size, Frequency, Frequency Fine	
Part numbers		
Desktop Model	19LM151A71UN/1	
With Resistive Touch	19LM151AR71UN/1	

Specifications are subject to change without notice.



## • Monitors

- Desktop Monitors
- Large screen Monitors
- Custom-made Monitors
- 19" Rack Mount Monitors
- Rear Mount Monitors
- Monitors for Panel Mount
- Monitors for VESA Mount
- Kiosks
- Accessories

## • Monitors – Specific applications

- Stainless Steel Monitors
- Car Displays
- Marine Monitors
- Military Monitors
- Replacement Monitors
- Train Monitors

## • Panel PC's

- High Performance Systems
- Custom made Panel PC's
- Low Power Systems
- Extreme environments

## • Pointing devices

- Accessories
- Touchpads
- Trackballs
- Trackball Modules
- Joysticks
- Custom made Pointing Devices

## • Keyboards

- Desktop Keyboards with or without pointer
- Built-in Keyboards with or without pointer
- Cables & Connectors
- Custom made Keyboards



Mulder-Hardenberg, est. 1927, is the answer to professional demands in the domain of electronic related environments. We don't just sell products. We use our multidiscipline knowledge to provide the best possible solution, designed to your specific interest.

### Contact details:

The Netherlands  
Mulder-Hardenberg B.V.  
Westerhoutpark 1a  
2012 JL Haarlem  
Tel.: +31 23 531 91 84  
info1@m-h.biz

Belgium, France, Luxemburg  
Mulder-Hardenberg N.V.  
Hoge Weg 129  
B-2940 Stabroek  
Belgium  
Tel.: +32 3 660 13 20  
info@m-h.biz

Germany  
Mulder-Hardenberg GmbH  
Nordring 13  
D-65719 Hofheim/Ts  
Tel.: +49 6192 - 97 91 85  
info@m-h.biz