

High Quality Desktop Display

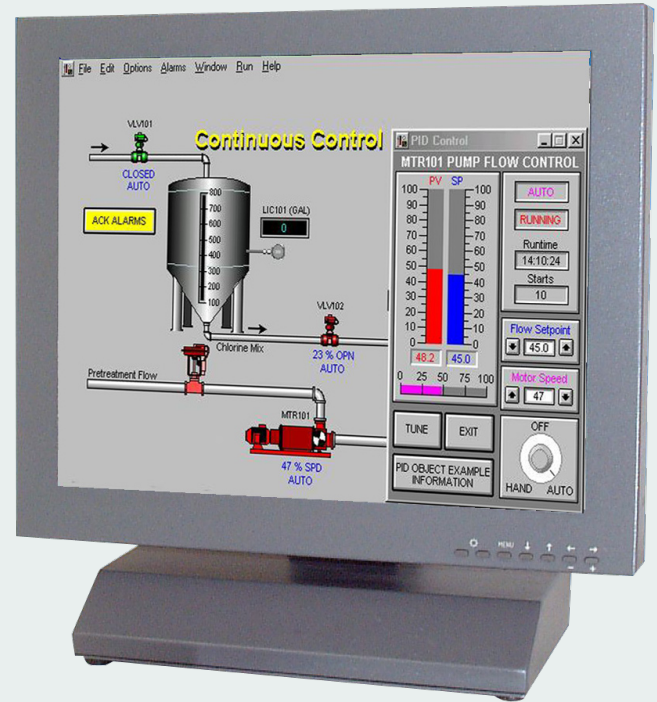
KME has developed this 19.0" Desktop model, within the popular 19LM series of LCD monitors, to address the growing demand for a monitor that is capable of displaying high quality PAL/NTSC video and VGA to SXGA data signals. The 19LM1901A31MPY/1 series has this capability. Two separate signal sources can be connected simultaneously and automatically switched on a Priority basis. Alternatively the video images may be presented as a "Picture in Picture" over a data image. This selection is set-up by the sophisticated OSD controls that also enable picture zoom, flip, rotate and freeze frame features. Remote access to the OSD controls is also available via the RS232 serial port.

The combination of a highly flexible PAL/NTSC video interface and a VGA to SXGA data display makes this monitor the perfect choice for system integrators eager to meet their client's current and future display requirements.

Features

- A heavy - duty tiltable desktop stand with automatic image size adjustment
- A touch screen can be easily integrated into the display
- All monitors have RCA, 15-D and DVI-D connectors
- The LCD monitor has been designed with solidity, being housed in a compact metal construction with a toughened glass protection screen

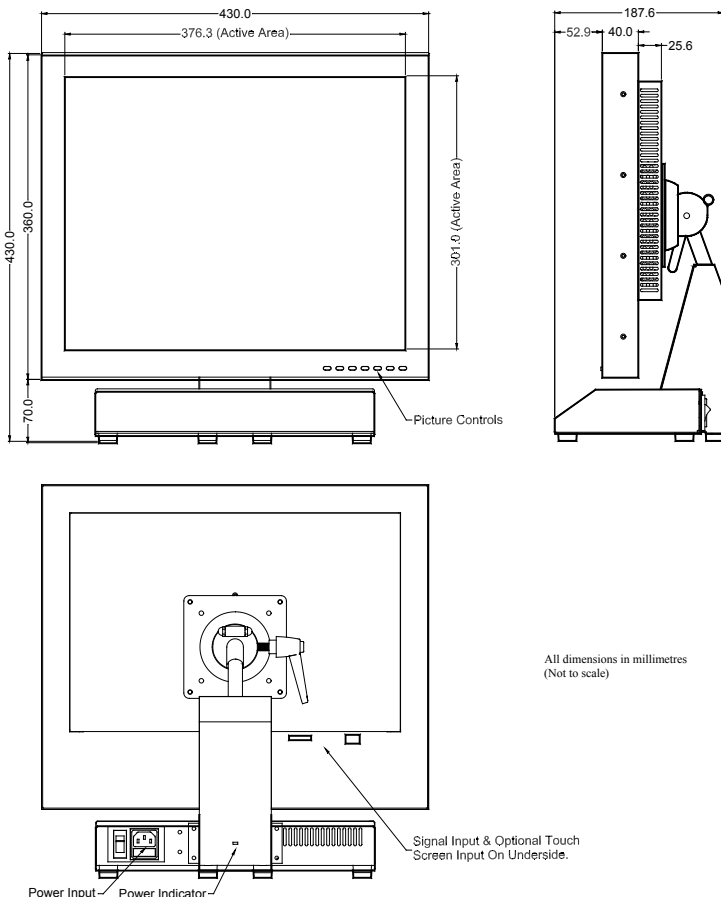
**19" Desktop LCD Monitor
19LM1901A31MPY/1**



Specifications: see next page

Specifications		
TFT Characteristics	Type Max. Resolution Active Display Area Response Time Contrast Ratio Brightness Viewing angles (at CR>10) Backlight life Nr. of colours	a-si TFT active matrix 1280 x 1024 pixels 376 x 301 mm 20ms average, typical 1000:1 typical @ CR≥10 250 cd/m ² typical 178°H, 178°V 50,000 hrs typical 16.7M
Video signal	Analog 0.7-1.0Vp-p	PAL / NTSC
Signal Sync	Separate H&V (+/-ve) TTL	Composite (CVBS) 1V p-p
Synchronisation Range	Horizontal scan Vertical scan	15kHz (PAL / NTSC) - 30kHz - 80kHz 50 to 70Hz
Power supply	90 - 260VAC 50/60Hz	Power pack inside base
Power consumption	55W (Max)	
Environmental	Storage temp Operating temp	-20 to 65°C 0 to 50°C
Dimensions	Monitor Weight	500 x 430 x 187 mm 9 kg approx
Input	DVI-D, 15-D, RCA	
Housing	Painted aluminium	
User controls	Rear mounted	
On screen buttons	Auto set-up, OSD	
Part numbers		
Desktop Model	19LM1901A31MPY/1	
Display Head only	29LM1901E31MPY/1	(12VDC)
AC Power Pack	20BK0220	
With Resistive Touch	19LM1901AR31MPY/1	
With Capacitive Touch	19LM1901AC31MPY/1	

Specifications are subject to change without notice.



• Monitors

- Desktop Monitors
- Large screen Monitors
- Custom-made Monitors
- 19" Rack Mount Monitors
- Rear Mount Monitors
- Monitors for Panel Mount
- Monitors for VESA Mount
- Kiosks
- Accessories

• Monitors – Specific applications

- Stainless Steel Monitors
- Car Displays
- Marine Monitors
- Military Monitors
- Replacement Monitors
- Train Monitors

• Panel PC's

- High Performance Systems
- Custom made Panel PC's
- Low Power Systems
- Extreme environments

• Pointing devices

- Accessories
- Touchpads
- Trackballs
- Trackball Modules
- Joysticks
- Custom made Pointing Devices

• Keyboards

- Desktop Keyboards with or without pointer
- Built-in Keyboards with or without pointer
- Cables & Connectors
- Custom made Keyboards



Mulder-Hardenberg, est. 1927, is the answer to professional demands in the domain of electronic related environments. We don't just sell products. We use our multidiscipline knowledge to provide the best possible solution, designed to your specific interest.

Contact details:

The Netherlands
Mulder-Hardenberg B.V.
Westerhoutpark 1a
2012 JL Haarlem
Tel.: +31 23 531 91 84
infol@m-h.biz

Belgium, France, Luxemburg
Mulder-Hardenberg N.V.
Hoge Weg 129
B-2940 Stabroek
Belgium
Tel.: +32 3 660 13 20
infoe@m-h.biz

Germany
Mulder-Hardenberg GmbH
Nordring 13
D-65719 Hofheim/Ts
Tel.: +49 6192 - 97 91 85
infoe@m-h.biz