

low Scan LCD Monitor

The 29LM081E71UN/1 series of LCD monitor Heads has been designed for industrial applications in the Control field and other users that require a compact SVGA monitor with a small footprint, high brightness display with good viewing angles. The rugged, metal construction of the monitor ensures exceptional stability, especially important when touchscreen operation is necessary. VESA fixings for Ergo Arm Mounting are on the rear cover.

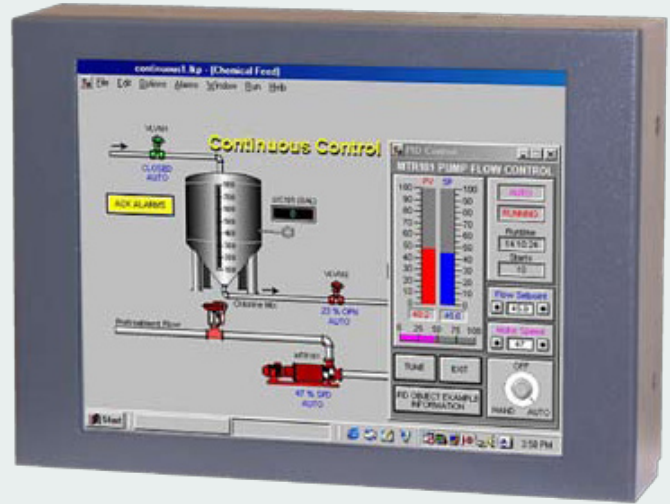
The KME A/D board has been designed to accept a wide range of signal timings from 15kHz up to VGA standard, including CGA & EGA legacy signals. Set-up controls for fine tuning of the display are located at the rear of the monitor. Once set, no further adjustments should be required, and the last setting is stored in memory.

Analogue & TTL signals are accepted via a 15D connector and a 2m VGA cable is supplied with the unit. KME can supply 9D-15D or BNC to 15D interface cables as required.

Features

- High Brightness/High Contrast TFT panel
- 15 to 60kHz Horizontal Scanning range
- 40 to 100 Hz Vertical Scanning range
- Programmable for non-standard Legacy signals
- Rear OSD Controls for maximum versatility
- Optional Touchscreen Integration

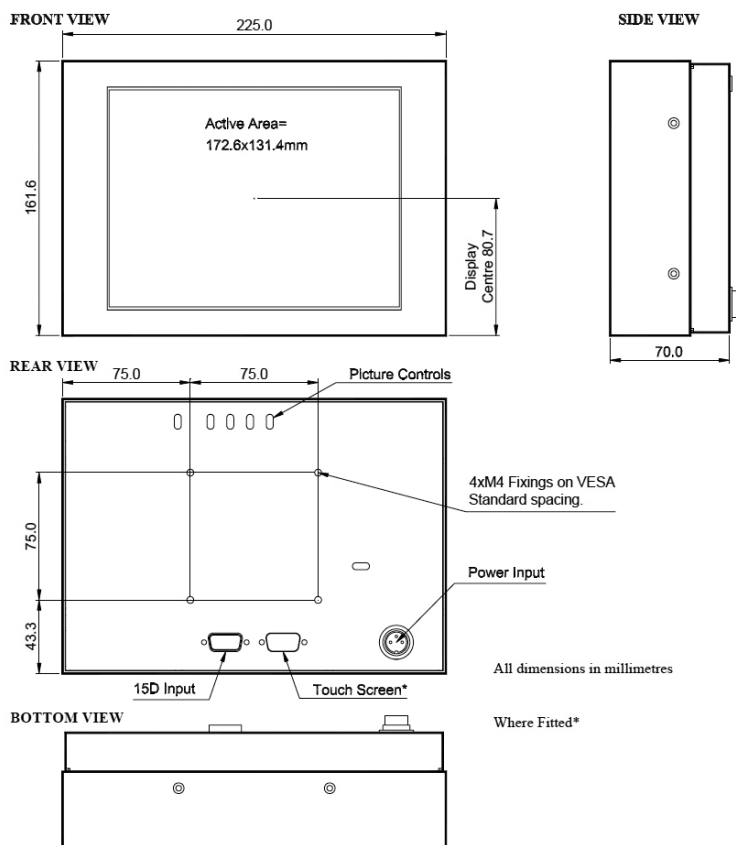
**8.4" LCD Head Monitor
29LM081E71UN-1**



Specifications: see next page

Specifications		
TFT Characteristics	Type Max. Resolution Active Display Area Contrast Ratio Brightness Viewing angles (at CR>10) Backlight life Nr. of colours Clock Rate	AM p-Si Colour TFT 800 x 600 pixels 170.4 x 127.8 mm 500:1 typical 350 cd/m ² typical 120° H, 100° V 50,000 hrs typical 256K 80MHz max
Sync. Type/Level	Separate H&V (+/-ve) TTL	or Composite (-ve) TTL or Sync-on-Green (-ve) 0.3V
Signal Sync	nalog RGB 0.7-1.0Vp-p or TTL RGB>2.75Vp-p	
Synchronisation Range	Horizontal scan Vertical scan	15 - 60kHz 40 - 100Hz
Multiscan Support	800 x 600 SVGA 640 x 480 VGA	+ pre-programmed timings in 15-30kHz range
Power Supply	12VDC	
Power consumption	25W (Max)	
Environmental	Storage temp. Operating temp.	-20 to 60°C 0 to 50°C
Dimensions	Monitor	222 x 162 x 70 mm
	Weight	2.5 kg approx
Input	15-pin HD Female	
Housing	Painted aluminium	
User controls	Rear Mounted	
On screen buttons	Brightness, Contrast, H/V Position & Size, Frequency, Frequency Fine	
Part numbers		
Model	29LM081E71UN/1	

Specifications are subject to change without notice.



• Monitors

- Desktop Monitors
- Large screen Monitors
- Custom-made Monitors
- 19" Rack Mount Monitors
- Rear Mount Monitors
- Monitors for Panel Mount
- Monitors for VESA Mount
- Kiosks
- Accessories

• Monitors – Specific applications

- Stainless Steel Monitors
- Car Displays
- Marine Monitors
- Military Monitors
- Replacement Monitors
- Train Monitors

• Panel PC's

- High Performance Systems
- Custom made Panel PC's
- Low Power Systems
- Extreme environments

• Pointing devices

- Accessories
- Touchpads
- Trackballs
- Trackball Modules
- Joysticks
- Custom made Pointing Devices

• Keyboards

- Desktop Keyboards with or without pointer
- Built-in Keyboards with or without pointer
- Cables & Connectors
- Custom made Keyboards



Mulder-Hardenberg, est. 1927, is the answer to professional demands in the domain of electronic related environments. We don't just sell products. We use our multidiscipline knowledge to provide the best possible solution, designed to your specific interest.

Contact details:

The Netherlands
 Mulder-Hardenberg B.V.
 Westerhoutpark 1a
 2012 JL Haarlem
 Tel.: +31 23 531 91 84
 infoNL@m-h.biz

Belgium, France, Luxemburg
 Mulder-Hardenberg N.V.
 Hoge Weg 129
 B-2940 Stabroek
 Belgium
 Tel.: +32 3 660 13 20
 infoBE@m-h.biz

Germany
 Mulder-Hardenberg GmbH
 Nordring 13
 D-65719 Hofheim/Ts
 Tel.: +49 6192 - 97 91 85
 infoDE@m-h.biz