

Slow Scan LCD Monitor

The 29LM123E71UN/1 series of Industrial LCD monitors have been designed as replacements for 12" CRT monitors now that supplies of 12" CRTs are difficult to obtain. Ease of integration into a wide range of Measurement, Instrumentation and Human-Machine interface applications has been a key consideration.

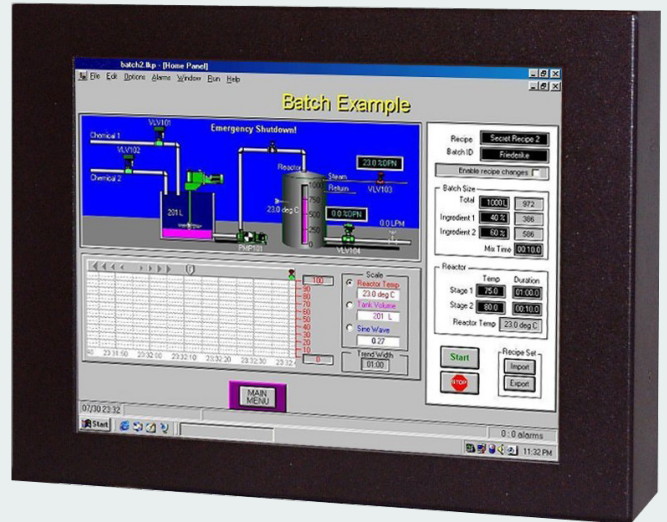
KME has designed a rugged LCD monitor module, of minimum width, to match the dimensions of its 12" CRT monitor chassis. The monitor is housed in a rugged metal case with rear fixing points. The LCD module is ventilated for best reliability when mounted within the OEM enclosure. EMC considerations include the use of a metal shield over the front of the LCD panel. Toughened, non-glare safety glass protects the LCD.

The A/D board has been designed to accept a wide range of signal timings from 15kHz up to SVGA standard, including CGA & EGA legacy signals. Set-up controls for fine-tuning of the display are located at the rear of the monitor. Once set, no further adjustments should be required, and the last setting is stored in memory.

Features

- CGA/EGA/VGA/SVGA compatible
- Analogue Video inputs via BNC/15HD
- TTL Inputs via 9D- 15D Accessory Cable
- Programmable for non-standard Legacy signals
- Rear OSD Controls for maximum versatility
- Optional Touchscreen Integration

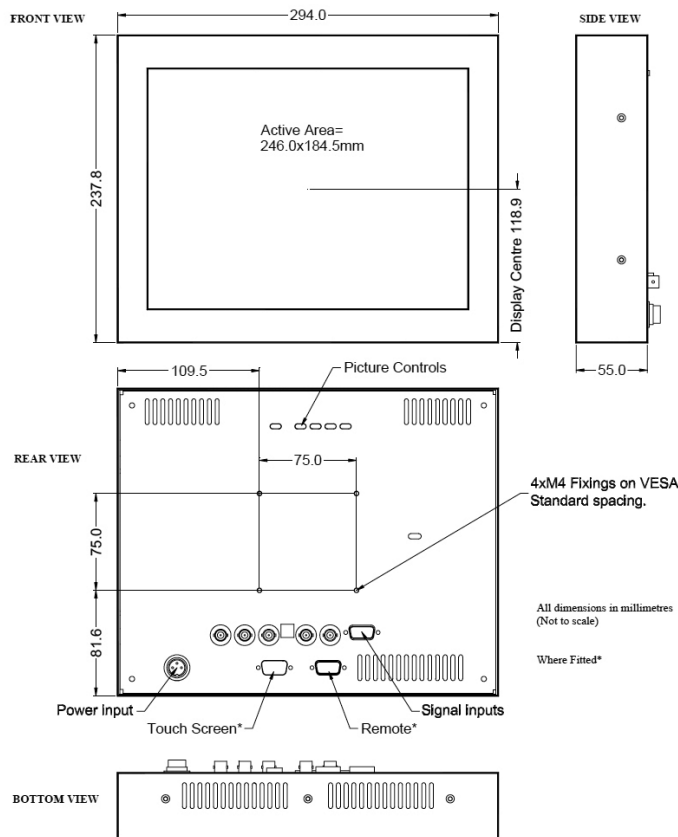
12.1" CRT Replacement LCD Monitor Head 29LM123E71UN-1



Specifications: see next page

Specifications		
TFT Characteristics	Type Max. Resolution Active Display Area Contrast Ratio Brightness Viewing angles (at CR>10) Backlight life Nr. of colours Clock Rate	AM Colour TFT 800 x 600 pixels 246mm x 184.5mm 500:1 typical 400 cd/m ² typical 140° H, 110° V 50,000 hrs typical 256K 80MHz max
Sync. Type/Level	Separate H&V (+/-ve) TTL	or Composite (-ve) TTL or Sync-on-Green (-ve) 0.3V
Signal Sync.	Analog RGB 0.7-1.0Vp-p	or TTL RGB>2.75Vp-p (via special TTL accessory cable)
Synchronisation Range	Horizontal scan Vertical scan	15-60kHz 40-100Hz
Multiscan Support	800 x 600 SVGA 640 x 480 VGA 640 x 400 640 x 350	& other pre-programmed timings in 15-30kHz range
Power supply	12.0VDC	
Power consumption	30W (Max)	
Environmental	Storage temp. Operating temp.	-20 to 70°C 0 to 55°C
Dimensions	Monitor	294 x 238 x 55 mm
	Weight	3.5 kg approx
Input	5 x BNC 75R. 15-pin HD Female	
Housing	Painted aluminium	
User controls	Rear mounted	
On screen buttons	Brightness, Contrast, H/V Position & Size, Frequency, Frequency Fine, Colour	
Part numbers		
Model	29LM123E71UN/1	

Specifications are subject to change without notice.



• Monitors

- Desktop Monitors
- Large screen Monitors
- Custom-made Monitors
- 19" Rack Mount Monitors
- Rear Mount Monitors
- Monitors for Panel Mount
- Monitors for VESA Mount
- Kiosks
- Accessories

• Monitors – Specific applications

- Stainless Steel Monitors
- Car Displays
- Marine Monitors
- Military Monitors
- Replacement Monitors
- Train Monitors

• Panel PC's

- High Performance Systems
- Custom made Panel PC's
- Low Power Systems
- Extreme environments

• Pointing devices

- Accessories
- Touchpads
- Trackballs
- Trackball Modules
- Joysticks
- Custom made Pointing Devices

• Keyboards

- Desktop Keyboards with or without pointer
- Built-in Keyboards with or without pointer
- Cables & Connectors
- Custom made Keyboards



Mulder-Hardenberg, est. 1927, is the answer to professional demands in the domain of electronic related environments. We don't just sell products. We use our multidiscipline knowledge to provide the best possible solution, designed to your specific interest.

Contact details:

The Netherlands
Mulder-Hardenberg B.V.
Westerhoutpark 1a
2012 JL Haarlem
Tel.: +31 23 531 91 84
infol@mh-h.biz

Belgium, France, Luxemburg
Mulder-Hardenberg N.V.
Hoge Weg 129
B-2940 Stabroek
Belgium
Tel.: +32 3 660 13 20
infobe@mh-h.biz

Germany
Mulder-Hardenberg GmbH
Nordring 13
D-65719 Hofheim/Ts
Tel.: +49 6192 - 97 91 85
infode@mh-h.biz