

**Slow Scan LCD Monitor**

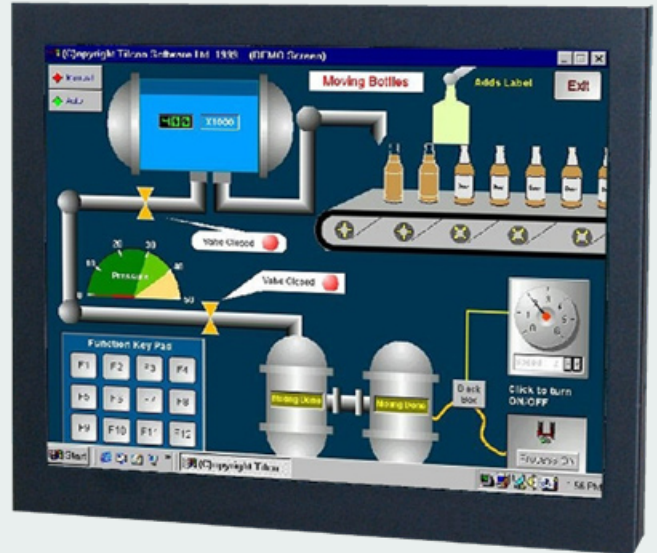
The 29LM153E78UN/2 series of 15.0" LCD monitors has been designed primarily for Slow Scan Legacy Systems as replacements for CRT monitors. They utilise a modern XGA TFT (1024 x 768 pixels) panel and a KME-designed Analog-Digital interface board. All elements, including a toughened glass protection screen, have been packaged in a Black metal housing of 338mm width. This series features OSD controls on the rear of the monitor. VESA fixings for Ergo Arm mounting are on the rear cover.

By special development of their own Signal Recognition and Scaling software, and access to an extensive library of older signal timings gained from 25+ years of CRT monitor manufacturing, KME has created a Universal flat panel monitor with unique 15kHz to 60kHz display capabilities. Some common Slow Scan Signal timings are factory pre-set. New ones may be added on request. Other signals, which are close to those listed, will give a display but some adjustment may be necessary for full screen performance. The final settings can be easily stored for future use.

**Features**

- CGA, EGA and all VESA standards up to XGA
- Image Size Adjustment & Save
- TTL, Analog & Interlaced Signals accepted
- Specially designed for Slow Scan Signals
- Rear OSD Controls for maximum versatility
- VESA Standard Fixings for Ergo Arm

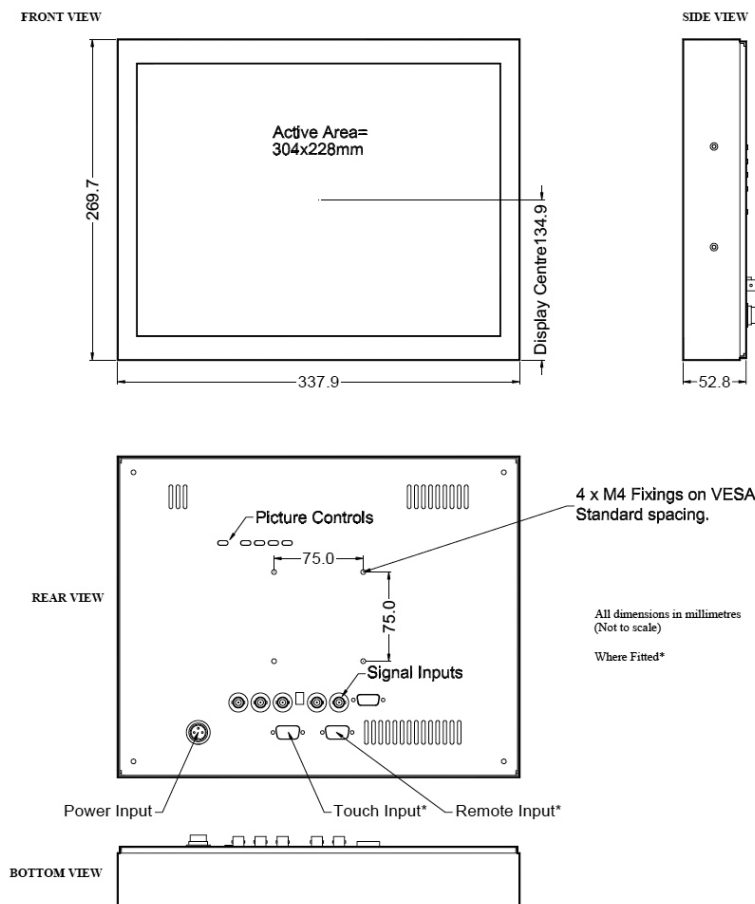
*15" CRT Replacement  
LCD Monitor Head  
29LM153E78UN-2*



Specifications: see next page

Specifications		
TFT Characteristics	Type Max. Resolution Active Display Area Contrast Ratio Brightness Viewing angles (at CR>10) Backlight life Nr. of colours	AM Colour TFT 1024 x 768 pixels 304 x 228 mm 450:1 typical 250 cd/m <sup>2</sup> typical 130° H, 110° V 50,000 hrs typical 16 million
Sync. Type/Level	Separate H&V (+/-ve) TTL	or Composite (-ve) TTL or Sync-on-Green (-ve) 0.3V
Signal Sync	Analog RGB 0.7-1.0Vp-p	or TTL RGB>2.75Vp-p (via special TTL accessory cable)
Synchronisation Range	Horizontal scan Vertical scan	15 - 60kHz 40 - 100Hz
Multiscan Support	1024 x 768 XGA 800 x 600 SVGA 640 x 480 VGA	+ pre-programmed timings in 15-30kHz range
Power supply	12VDC	
Power consumption	35W (Max)	
Environmental	Storage temp.	-20 to 60°C
	Operating temp.	0 to 50°C
Dimensions	Monitor	338 x 270 x 53 mm
	Weight	4.5 kg approx
Input	15D + 5 x BNC	
Housing	Painted aluminium	
User controls	Rear mounted	
On screen buttons	Brightness, Contrast, H/V Position & Size, Frequency, Frequency Fine	
Part numbers		
Model	29LM153E78UN/2	

Specifications are subject to change without notice.



## • Monitors

- Desktop Monitors
- Large screen Monitors
- Custom-made Monitors
- 19" Rack Mount Monitors
- Rear Mount Monitors
- Monitors for Panel Mount
- Monitors for VESA Mount
- Kiosks
- Accessories

## • Monitors – Specific applications

- Stainless Steel Monitors
- Car Displays
- Marine Monitors
- Military Monitors
- Replacement Monitors
- Train Monitors

## • Panel PC's

- High Performance Systems
- Custom made Panel PC's
- Low Power Systems
- Extreme environments

## • Pointing devices

- Accessories
- Touchpads
- Trackballs
- Trackball Modules
- Joysticks
- Custom made Pointing Devices

## • Keyboards

- Desktop Keyboards with or without pointer
- Built-in Keyboards with or without pointer
- Cables & Connectors
- Custom made Keyboards



Mulder-Hardenberg, est. 1927, is the answer to professional demands in the domain of electronic related environments. We don't just sell products. We use our multidiscipline knowledge to provide the best possible solution, designed to your specific interest.

### Contact details:

The Netherlands  
 Mulder-Hardenberg B.V.  
 Westerhoutpark 1a  
 2012 JL Haarlem  
 Tel.: +31 23 531 91 84  
 infoNL@m-h.biz

Belgium, France, Luxembourg  
 Mulder-Hardenberg N.V.  
 Hoge Weg 129  
 B-2940 Stabroek  
 Belgium  
 Tel.: +32 3 660 13 20  
 infoBE@m-h.biz

Germany  
 Mulder-Hardenberg GmbH  
 Nordring 13  
 D-65719 Hofheim/Ts  
 Tel.: +49 6192 - 97 91 85  
 infoDE@m-h.biz