



- 105 keys, short travel
- touchpad
- stainless steel housing
- IP65 sealing

FOOD KEYBOARD WITH TOUCHPAD

This “food” keyboard is specifically adapted to the harsh conditions in food processing industry. The combination of cold environment and hot cleaning/damp water creates one of the most challenging environments for electronic HMI devices. Touchscreen might seem like the perfect solution, but has its limits towards ergonomics and usability. Designed around a new concept that integrates the experience NSI has built up in this market throughout the years, we are introducing a number of innovations that will result in a very reliable and stable solution.

MAIN FEATURES

- All stainless steel enclosure, sealed to IP65
- Integration of a waterproof breathable membrane on the backside, creating a dry environment inside the enclosure.
- Design optimized to reduce contamination.
- Integrated touchpad, integrating multi-finger gestures, adapted to be used with gloves
- Short travel switches of 0,3 mm with low pressure of 2.55N for increased speed typing
- Positive tactile feedback and key embossing
- Optimum legending colour scheme and contrast
- User-friendly layout with separate numerical-, control- and function keypads
- Dimensions / weight : 475 x 200 x 52 mm / 2,9 kg

Typical applications

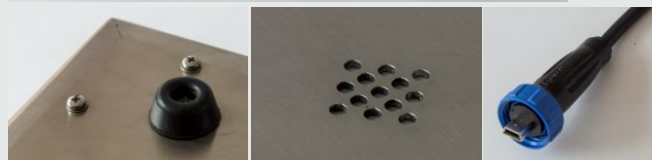
Food industry – automation
 Breweries
 Industrial bakeries
 Vegetable processing plants
 Meat processing plants
 System integrators specialised in this market
 Restaurant applications
 and much more...

GENERAL TECHNICAL SPECIFICATIONS

Sealing	: IP65 sealed
Keys	: 105 short travel keys
Pointing Device	: multi touch touchpad
Operating temperature	: 0°C to +60°C
Output	: detachable 2m. shielded USB cable, IP68, ended by a type A connector
Housing	: stainless steel
Front layer	: polyester, chemical resistant
Supply voltage	: +5V +/- 5% (via keyboard port)
Supply current	: 200mA max.

ORDER INFO

COUNTRY LAYOUT	
US Qwerty	KSTP105RVS0001USB
Cyrillic Russian	KSTP105RVS0007USB
Belgian Azerty	KSTP105RVS0032USB
French Azerty	KSTP105RVS0033USB
Norwegian Qwerty	KSTP105RVS0047USB
German Qwertz	KSTP105RVS0049USB





Dim in mm.

COLOURS

- Keyboard Background : RAL7035 Light grey
- Key Background : RAL9010 Pure white
- Key edges & legends : RAL5003 Sapphire blue
- Enclosure : Stainless steel

The company reserves the right to alter without prior knowledge the specification or design of any standard product or service.



- 105 keys, short travel
- 38 mm trackball
- stainless steel housing
- IP65 sealing

FOOD KEYBOARD WITH TRACKBALL

This “food” keyboard is specifically adapted to the harsh conditions in food processing industry. The combination of cold environment and hot cleaning water/damp creates one of the most challenging environments for electronic HMI devices. Touchscreen might seem like the perfect solution, but has its limits towards ergonomics and usability. Designed around a new concept that integrates the experience NSI has built up in this market throughout the years, we are introducing a number of innovations that will result in a very reliable and stable solution.

MAIN FEATURES

- All stainless steel enclosure, sealed to IP65
- Integration of a waterproof breathable membrane on the backside, creating a dry environment inside the enclosure
- Design optimized to reduce contamination.
- Integrated 38 mm trackball, IP68 and easily cleanable
- Short travel switches of 0,3 mm with low pressure of 2.55N for increased speed typing
- Positive tactile feedback and key embossing
- Optimum legending colour scheme and contrast
- User-friendly layout with separate numerical-, control- and function keypads
- Dimensions / weight : 475 x 200 x 58 mm / 3,1 kg

Typical applications

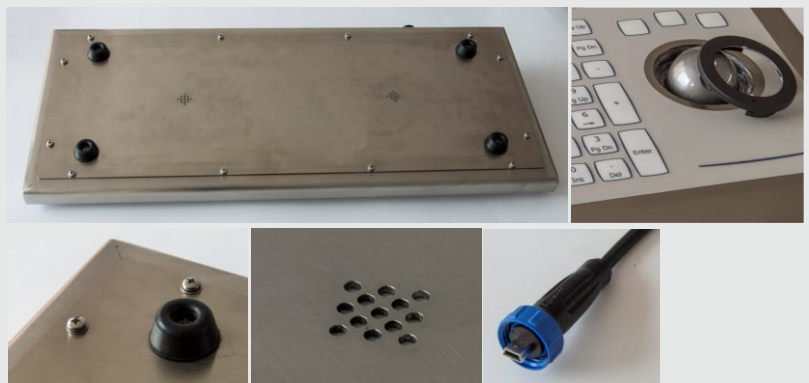
Food industry – automation
 Breweries
 Industrial bakeries
 Vegetable processing plants
 Meat processing plants
 System integrators specialised in this market
 Restaurant applications
 and much more...

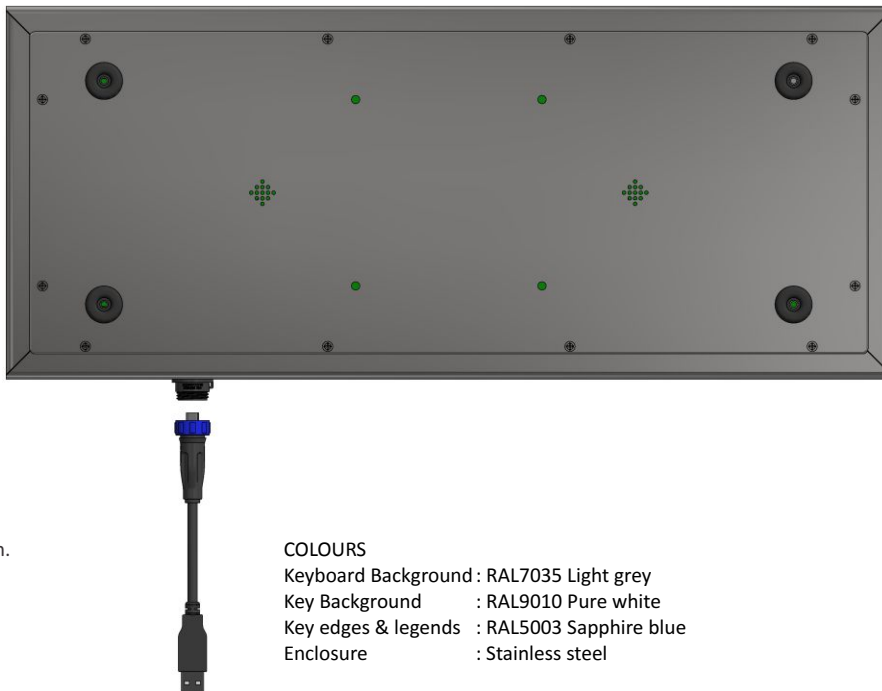
GENERAL TECHNICAL SPECIFICATIONS

Sealing	: IP65 sealed
Keys	: 105 short travel keys
Pointing Device	: 38 mm waterproof laser trackball
Operating temperature	: 0°C to +60°C
Output	: detachable 2m. shielded USB cable, IP68, ended by a type A connector
Housing	: stainless steel
Front layer	: polyester, chemical resistant
Supply voltage	: +5V +/- 5% (via keyboard port)
Supply current	: 200mA max.

ORDER INFO

COUNTRY LAYOUT	
US Qwerty	KSTM105RVS0001USB
Cyrillic Russian	KSTM105RVS0007USB
Belgian Azerty	KSTM105RVS0032USB
French Azerty	KSTM105RVS0033USB
Norwegian Qwerty	KSTM105RVS0047USB
German Qwertz	KSTM105RVS0049USB





Dim in mm.

- COLOURS**
 Keyboard Background : RAL7035 Light grey
 Key Background : RAL9010 Pure white
 Key edges & legends : RAL5003 Sapphire blue
 Enclosure : Stainless steel

The company reserves the right to alter without prior knowledge the specification or design of any standard product or service.