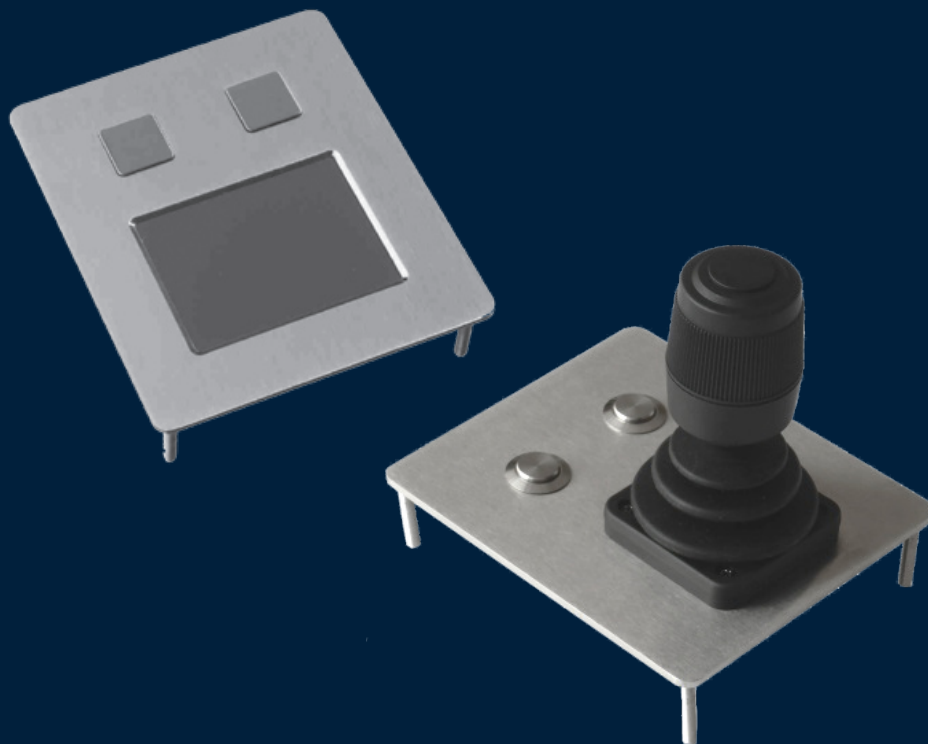


Industrial Touchpads & Joysticks



KEYBOARDS & TRACKBALLS
FOR THE MOST DEMANDING JOBS

Catalogue Content (partnrs. are clickable)

Industrial Touchpads & Joysticks

SPM55 serie

SPS55F8

CST100F2



KEYBOARDS & TRACKBALLS
FOR THE MOST DEMANDING JOBS

The SPM55 series NSI is specially designed for harsh industrial environment applications. It is a precise and accurate cursor control device, which operates at all angles and requires no cleaning. The touchpad uses the Field Distortion Technology to sense the presence of your finger. This device is not pressure sensitive, a light touch is sufficient, tracking your fingertip precisely. A light tap on the surface activates your selection. To drag and drop, just tap twice and hold your finger down on the second tap. Drag the item wherever you want, then lift your finger to drop. To double-click just tap twice. As alternative to the here above described operation you can use the separate buttons. Carrier plates and housing are metal (aluminium and steel). The units can be directly connected to a PS/2 port or to an USB port.

Panel mount (incl. alu carrier plate, electronics and cable)

Intended for back panel mounting into users' cabinet or panel with a minimum of required space and mounting depth. A metal cover on the backside protects the electronical parts. Operation of the touchpad is possible at all angles, from horizontal to vertical mounting position.

Dimensions / weight: 92,5 x 180 x 30 mm / 0,5 kg

Enclosed

The SPM55S1 is housed in a steel enclosure. Because of its slim line it can directly be placed in 19" drawers of 1HU or it can be used as a stand alone desktop unit. This unit is completely dust- and water-proof up to the IP65 protection rating.

Dimensions / weight: 106 x 204 x 42 mm / 1 kg

*Touchpad Unit
IP65 Sealed - SPM55*



Connectivity

These combo PS/2 & USB touchpad units have a 1,6 meter long shielded straight cable ended by a USB type A plug. An adaptor to PS/2 is added. No special device driver is needed, use standard available drivers of your operating system.

For optimal performance of the Touchpad feature, we recommend to download the Touchpad device driver from: www.synaptics.com/support/downloads.cfm

** Due to the increasing differences of the PS/2 mouse port specifications of the various PC manufacturers, we do recommend that this unit should be tested on the final PC configuration and operating system prior to installing it in series.*



KEYBOARDS & TRACKBALLS
FOR THE MOST DEMANDING JOBS

Part nr.	
SPM55N1	Panel Mount version
SPM55S1	Enclosed version

The SPS55F8 from NSI features a capacitive type touchpad mounted into a stainless steel carrier plate, equipped with two stainless steel switches. The Solid State Touchpad and the switches are IP68 grade. The silicone sponge panel seal, which is part of the supply, provides waterproof IP68 sealing for the total unit when properly mounted into the customers' panel.

The touchpad uses the "Field Distortion Technology" to sense the presence of the finger.

The device is not pressure sensitive, a light touch is sufficient, tracking your fingertip precisely. Because of the capacitive working principle, the unit might not work with thicker gloves.

The unit is designed for harsh industrial applications, it will operate at all mounting angles and it does not require cleaning or maintenance. Therefore, it is very well suited for a wide range of applications, indoor and outdoor, such as public access- and information kiosks or terminals, navigation control, processing industry and many others.

*Waterproof & Vandal Proof Touchpad Unit
IP68 sealed
SPS55*



Connectivity

These combo PS/2 & USB touchpad units have a 1,6 meter long shielded straight cable ended by a USB type A plug. An adaptor to PS/2 is added. No special device driver is needed, use standard available drivers of your operating system.

** Due to the increasing differences of the PS/2 mouse port specifications of the various PC manufacturers, we do recommend that this unit should be tested on the final PC configuration and operating system prior to installing it in series.*



KEYBOARDS & TRACKBALLS
FOR THE MOST DEMANDING JOBS

Part number	
SPS55F8	Vandalproof & Waterproof Touchpad

This dual function NSI joystick unit provides a combined functionality into one single device. One modus enables the user to use the unit as a mouse pointer, the second modus will provide the user with a 3-axis joystick function.

Switching between the two functions is done by pressing the pushbutton that sits on top of the joystick.

This 3-axis joystick unit has a robust, vandalproof construction and metal look : the carrier plate made of brushed stainless steel and two anti-vandal stainless steel IP65 sealed switches. Highly ruggedized

and designed for harsh industrial applications, navigation controls, etc...

The speed of the cursor movement can be adapted (OEM only). No special drivers required

*Dual Function Joystick Unit, IP65 sealed
CST100F2*



NSi KEYBOARDS & TRACKBALLS
FOR THE MOST DEMANDING JOBS

Part number	
CST100F2	Dual function joystick unit